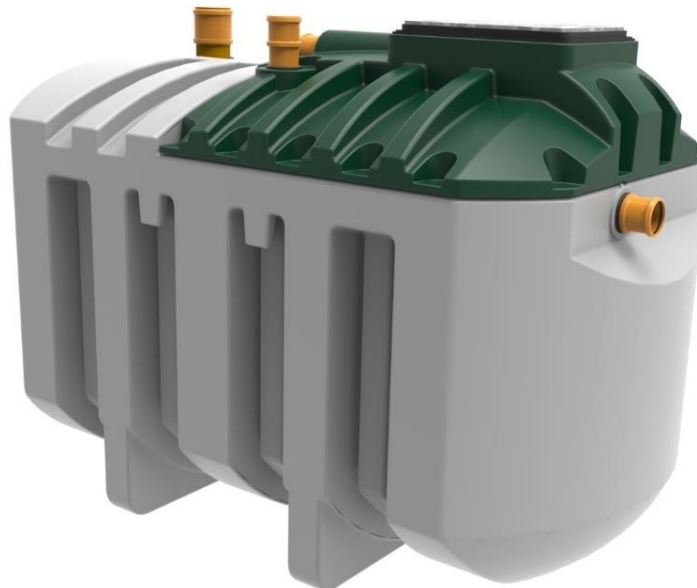




CAP12 Wastewater Treatment Plant

The Harlequin CAP12 is a compact sewage treatment plant designed specifically for larger domestic or small commercial installations of up to 12 people.

It is a continuous aeration plant which operates using a unique bio-media system and delivers a pollutant removal level of 96.2% whilst also combatting common problems associated with small packaged domestic plants.



Standard Features:

- ◆ Moulded from durable medium density polyethylene material
- ◆ 110mm inlet and outlet connections
- ◆ 110mm services duct
- ◆ Integrated lifting eyes for ease of handling and installation
- ◆ Fully secured 600x450mm pedestrian duty, flush fitting manhole cover complies with statutory regulations
- ◆ Above ground air blower housing delivers more reliable and efficient operation, and allows easy access for maintenance
- ◆ Easy access to the bubble diffuser within the tank
- ◆ A MBBR system - there is no fixed media, eliminating blockages
- ◆ Virtually silent operation
- ◆ Compact size and light weight reduces installation costs
- ◆ Mechanically reliable with no moving parts or electrics within the tank
- ◆ Certified to EN12566-3



CAP12 Wastewater Treatment Plant

Optional Equipment:

- ◆ Air blower function alarm
- ◆ Pumped outlet
- ◆ 300mm manhole riser(s). Max 3 risers (800mm) on a gravity tank or 2 risers (550mm) on a pumped outlet*

* Maximum invert level 2m. Use 1200mm concrete rings to achieve inverts below max. number of risers.

Technical Data:

	<i>Efficiency</i>	<i>Effluent</i>	
Treatment Efficiency	COD	92.6%	64.0 mg/l
	BOD ₅	96.2%	13.0 mg/l
	NH ₄ -N	71.9%	11.2 mg/l
	N _{TOT}	58.2%	22.6 mg/l
	Phosphorus	41.0%	4.3 mg/l
	SS	96.8%	12.0 mg/l
Nominal hydraulic daily load	1,800 Litres / day		
Nominal organic daily load	640g BOD ₅ / day		
Inhabitants served	10 - 12		
Desludging interval	12 months *		
Electrical consumption	2.5 kWh / day		
Power requirements	230V 105W 0.9A (start-up current)		
Volumes (at operational height)	Primary settlement – 2295 Litres Aeration chamber – 1245 Litres Final settlement – 935 Litres		
Overall dimensions	L 2900 W 1620 H 2000 mm		
Standard inlet depth	500 mm		
Standard outlet depth	660 mm		
Depth from invert to base	1500 mm		
Pipe diameter	110 mm		
Net Weight	460 kg		

* de-sludge interval up to 12 months depending on the number of inhabitants

Issued By:

Harlequin Manufacturing Limited
 21 Clarehill Road, Moira, Co. Armagh, N.Ireland, BT67 0PB
 T: +44 (0)28 9261 1077
 W: www.harlequin-mfg.com
 E: info@harlequin-mfg.com